



*Charge with Us, Anytime, Anywhere.*

**Chargers**  
2go

**SMARTWATCH  
FOR ANDROID  
AND IPHONE**

## THE BENEFIT OF THE SIMCARD

When installing a SIM Card from a Carrier (T-Mobile, AT&T, ETC.) the SmartWatch allows you to make and receive calls, send and receive text messages without being dependent to a cell phone connection. The SD Card has a capacity of a 32GB memory card, it is highly recommended to add at least a 4GB SD Card since the SmartWatch only brings 128MB of internal memory.

---

## SMARTWATCH CONNECTION FOR PHONES



**ANDROID**

---

- On your Smart Phone download the application "BTNotification" directly from the "Play Store".



## BTNotification

深圳软安科技

Everyone

INSTALL

Contains ads



Downloads



717 ⚡



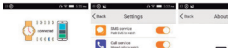
Tools



Similar

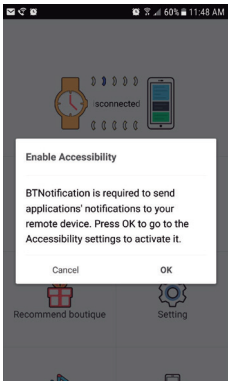
Here are some notification settings can be pushed to your smart watch.

[READ MORE](#)

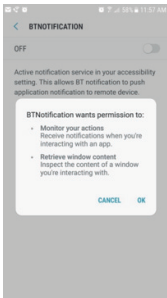
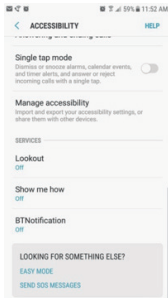


- Once App shows installed select 'Open':

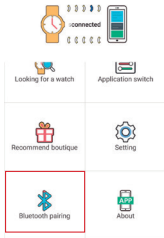
- As soon as you open the app, “Enable Accessibility” message will prompt you - Press “OK” to activate “Accessibility Settings”.



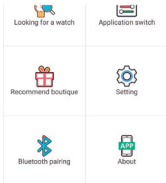
- Scroll down until you come across “BTNotification” - Should appear as “OFF”, press it to turn “ON” to allow the application full access to your Smart Phone.



- On the SmartWatch go to the “Bluetooth Icon” and select Power “ON” it will automatically turn Visibility “ON”.
- Return to the App - Select the “Bluetooth Pairing” Option – Locate the SmartWatch’s Model to pair them together.



- Your Smart Phone will ask if you want to share “Contacts” and “Messages” - Select “ALLOW”.
- SmartWatch will ask to Sync date and time with remote device select “ALLOW”.
- Once your SmartWatch and your Smart Phone are paired via Bluetooth you could Return to the App and it should appear as “CONNECTED”




- The difference between 'BT' and 'Local' options in the SmartWatch; 'BT' is only for the use of the SmartWatch with a linked, via Bluetooth, Smart Phone - The 'Local' option is for when using an independent SIM Card.



## IPHONE

---

- In the SmartWatch press the Bluetooth icon and select Power on Bluetooth and then turn visibility "ON".
- Turn on the Bluetooth on your phone and locate the Smartwatch's model and pair.
  - Phones will ask if you want to share contacts and messages select "ALLOW".
  - SmartWatch will ask to Sync date and time with remote device select "ALLOW".
- If the Contacts are not paired via Bluetooth to the SmartWatch and the SmartWatch is linked to the iPhone but shows this symbol  - Open Settings and 'Sync Contacts' should be ON then 'Phone Favorites / Phone Recent / All contacts' should all be checked.
- The difference between the 'BT' and 'Local' option in the SmartWatch is simple; 'BT' is only for the use of the SmartWatch with a linked, via Bluetooth, cellphone. The 'Local' option is for when using an independent SIM Card.



*¿QUESTIONS?*

*PLEASE CALL*

***18559279000***



[www.chargers2go.net](http://www.chargers2go.net)